



The World's No. 1 in Can Machinery

Tobacco Lines

Filling, compressing and seaming machines for tobacco
in tin and composite cans

2010.1



Grabher INDOSA-Maschinenbau AG
Industriestrasse 24
CH-9434 Au (St.Gallen)
Schweiz

Telefon +41 (0)71 747 57 57
Telefax +41 (0)71 747 57 47
www.indosa.com
info@indosa.com



INDOSA matic 100 K2 cardboard bottom sealing machine

- Conveyor for can inlet and can outlet
- Indexing turret for can positioning
- Station to fill and compress tobacco into cans
- Cardboard bottom magazine with destacker
- Heat-sealing station for centering and presealing the cardboard bottom onto the can
- Heat-sealing station for pressing and tight sealing the can

Capacity
Cans
Can ends
Sealing

25-40 cans/min
normal composite cans with or without aluminium inner liner
blanked and deep-drawn cardboard bottom with sealing medium
double heat-sealing with compressing

Fully automatic seaming machine for sealing of environmentally friendly cardboard bottoms onto composite cans

In basic structure and conception this machine is exactly alike the thousand times well proved INDOSA-matic for seaming of "normal" tin or aluminium bottoms onto tin or composite cans. Even the handling and capacity do hardly differ from a tin bottom seaming machine. Instead of a lid destacker with slide a lid destacker with suction cup and in lieu of a seaming chuck with 2 seaming rolls 2 heat-sealing stations are in use. For the applier the machine is just as uncomplicated and easy to handle as all INDOSA-matics. Instead of tin bottoms the can manufacturer supplies you with cardboard bottoms, also made with an appropriate INDOSA tool.

It is as well possible to integrate into this INDOSA-matic seaming machine an INDOSA filling machine suitable for your product. Consequently, this automatic machine can in a simple manner be extended to a compact automatic filling and seaming unit.

The INDOSA programme also includes corresponding transportation belts, accumulation tables, packaging tables, etc.

Likewise, in case of great need the cardboard bottoms can be manufactured directly from a cardboard reel, using an INDOSA KST blanking and deep-drawing machine.

Some advantages of the cardboard bottom on composite cans:

- Environmentally friendly, future-orientated
- Reasonable in price with regard to manufacture and basic material
- Reasonably priced waste disposal (paper can with paper bottom)
- Perfect, tight sealing (heat-sealed and compressed)
- Cans and lids can be lined with or without aluminium inner foil



Composite can with
INDOSA tear-off membrane and INDOSA
cardboard reclosing insert lid



Composite can closed with
INDOSA cardboard bottom

Grabher INDOSA AG - The World's No. 1 in Can Machinery

since 1936

Industriestrasse 24
P.O.Box 447
CH-9434 Au (St.Gallen)
Switzerland

Telephone: +41 (0)71 747 57 57
Telefax: +41 (0)71 747 57 47
Internet: www.indosa.com
E-Mail: info@indosa.com



INDOSA filling and sealing lines

INDOSA-matic 100 K2 with filling station for tobacco and sealing of cardboard bottoms onto round or non-round composite cans.



INDOSA automatic can filling machine with tobacco filling station / tobacco compressor for rectangular (non-round) cans.

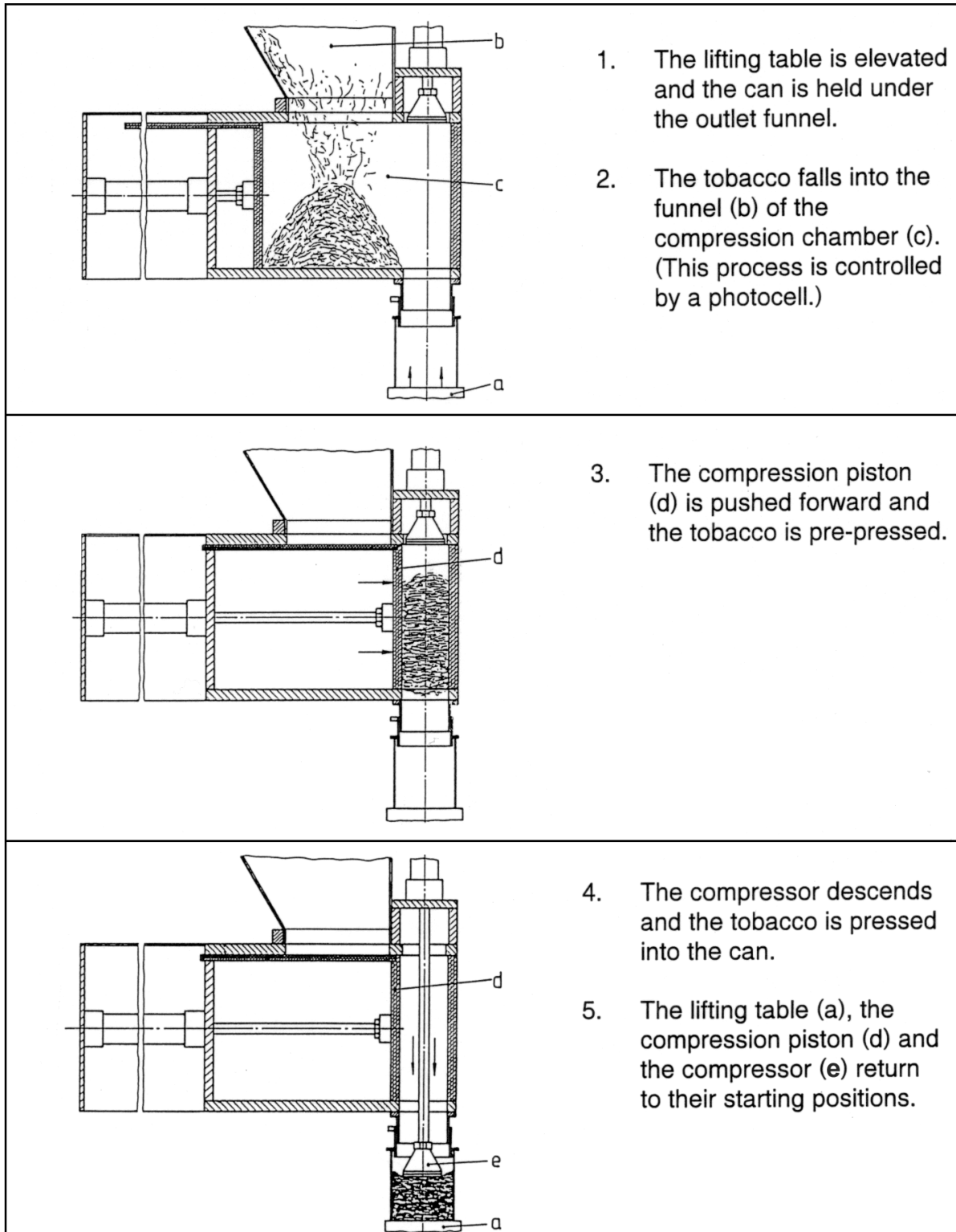


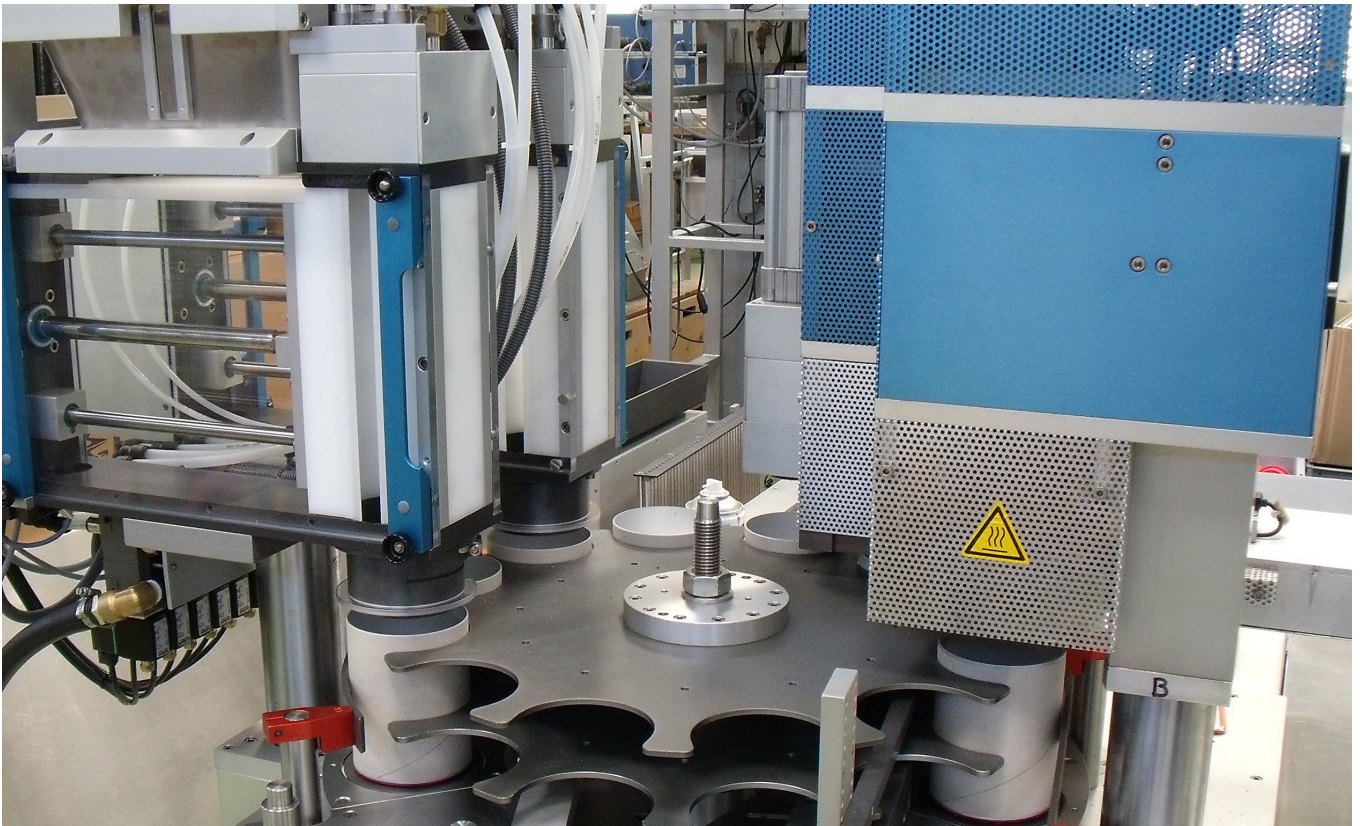
Grabher INDOSA AG - The World's No. 1 in Can Machinery

since 1936

Industriestrasse 24
P.O.Box 447
CH-9434 Au (St.Gallen)
Switzerland

Telephone: +41 (0)71 747 57 57
Telefax: +41 (0)71 747 57 47
Internet: www.indosa.com
E-Mail: info@indosa.com

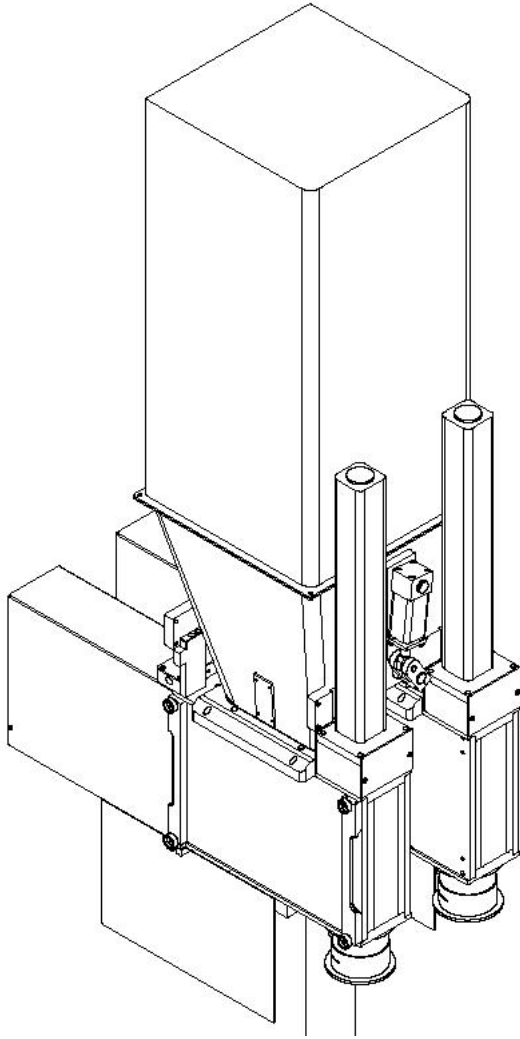




Automated Systems for tobacco handling

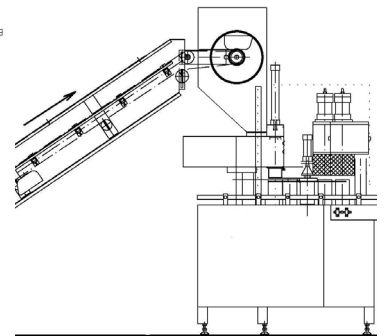
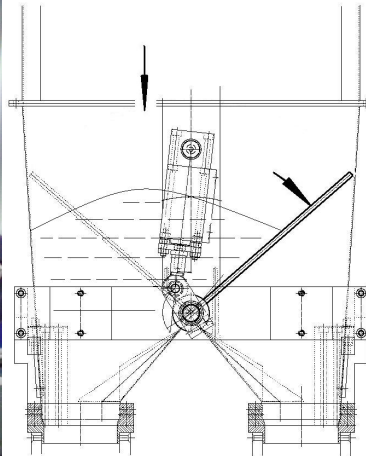
- Two tobacco filling stations with integrated tobacco compression system
- tobacco inlet funnel
- Sealing of cardboard cans or tin cans
- Cardboard bottom magazine with destacker
- Heat-sealing station for centering and presealing the cardboard bottom onto the can
- Heat-sealing station for pressing and tight sealing the can

Product:	tobacco
Capacity:	40 cans per minute (Ø 99)
Can range:	Ø 73 - Ø100, all heights
Can type:	tin or composite cans



Automatic Can Filling Machine for tobacco

- Two tobacco filling stations with integrated tobacco compression system
- Sealing of cardboard cans or tin cans



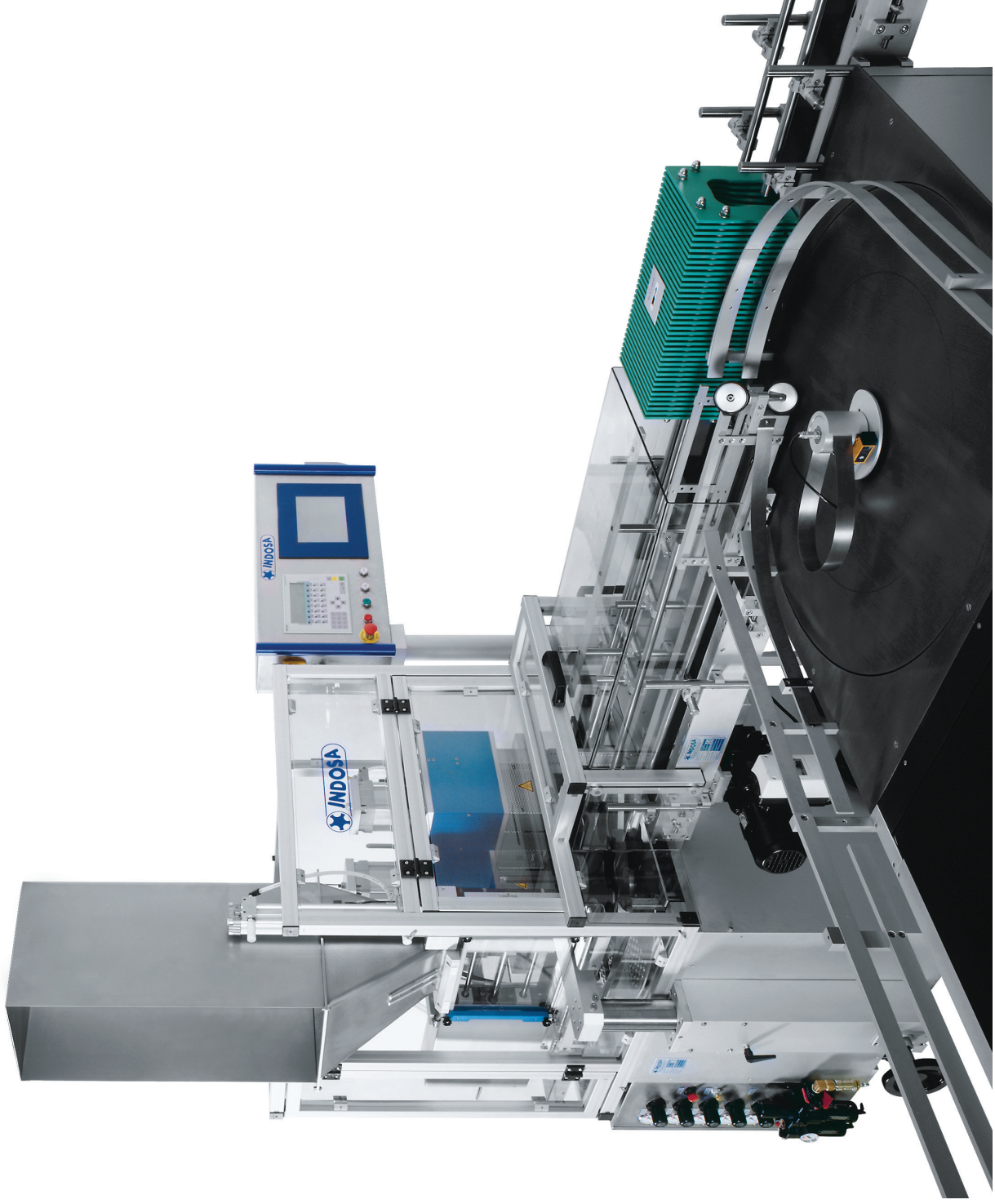
Grabher INDOSA AG - The World's No. 1 in Can Machinery

since 1936

Industriestrasse 24
P.O.Box 447
CH-9434 Au (St.Gallen)
Switzerland

Telephone: +41 (0)71 747 57 57
Telefax: +41 (0)71 747 57 47
Internet: www.indosa.com
E-Mail: info@indosa.com

INDOSA matic 100 K2 – Tobacco Paper can sealer with tobacco filling and compressor station



The World's No. 1 in Can Machinery

Grabher INDOSA-Maschinenbau AG

Industriestrasse 24

CH-9434 Au (St. Gallen)

Switzerland

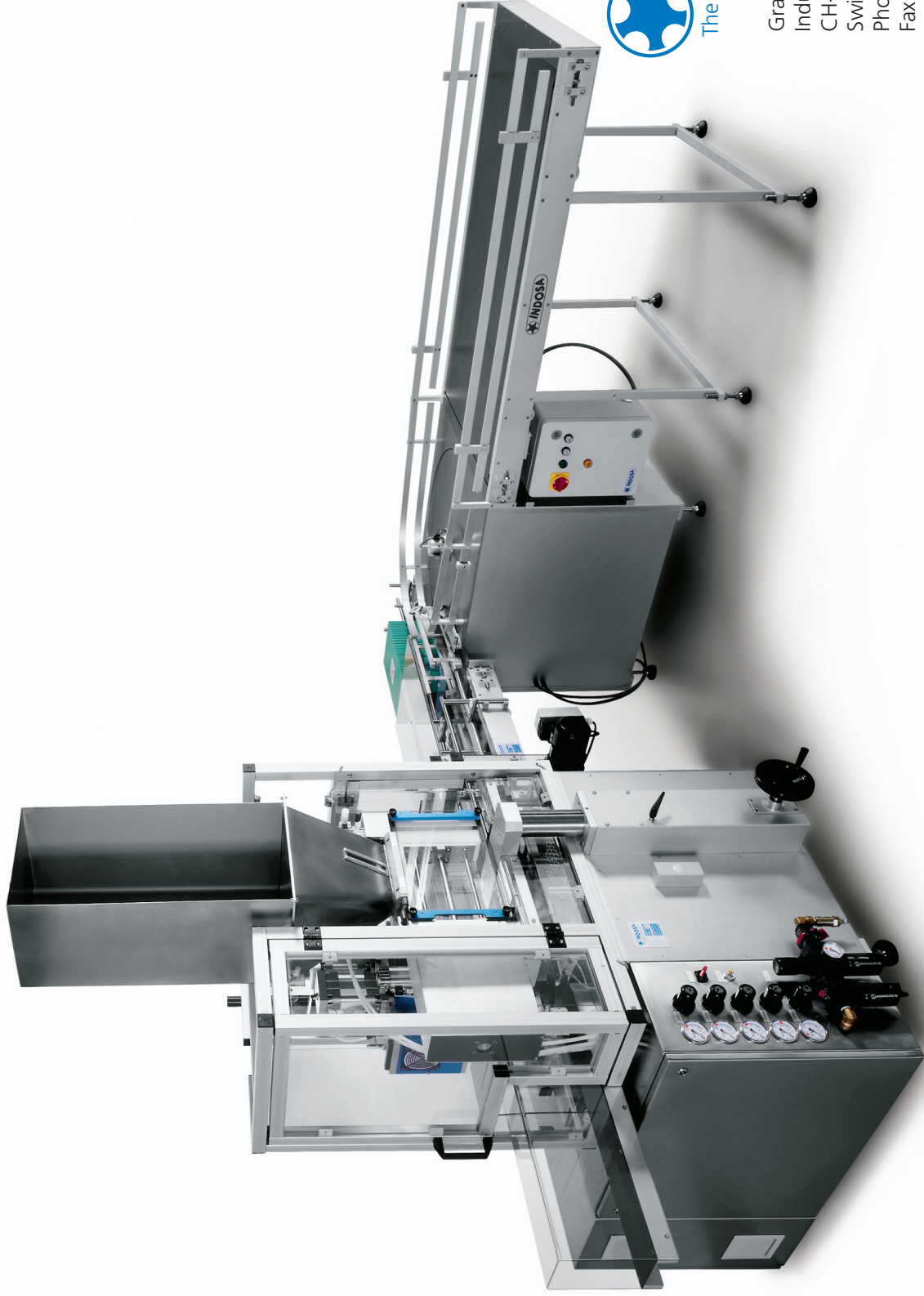
Phone +41 (0)71 747 57 57

Fax +41 (0)71 747 57 47

www.indosa.com

info@indosa.com

INDOSA matic 100 K2 - Tobacco Paper can sealer with tobacco filling and compressor station



The World's No. 1 in Can Machinery

Grabher INDOSA-Maschinenbau AG
Industriestrasse 24
CH-9434 Au (St. Gallen)
Switzerland
Phone +41 (0)71 747 57 57
Fax +41 (0)71 747 57 47

www.indosa.com
info@indosa.com